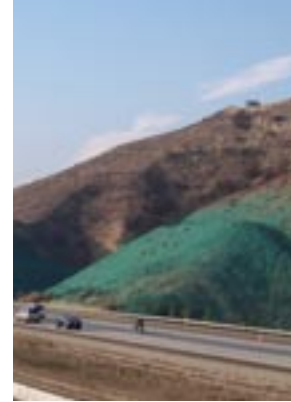


# Terra-Matrix™ SM

## Stabilized Fiber Matrix



## Superior Site Protection in a Quick, Safe, Easy Hydraulic Application

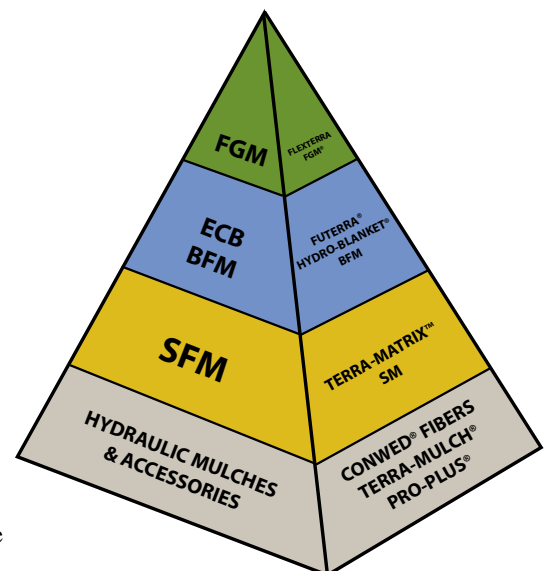
**Terra-Matrix™ SM** is the newest innovation from Profile Products, the undisputed leader in erosion and sediment control technology. It is specially formulated to provide cost-effective stabilization of soils on active construction and building sites. Unlike polymeric stabilizers comprised of flocculants that need to be blended on site, the pre-blended combination of Thermally Refined™ wood fibers, proprietary crosslinked tackifiers and activators anchor the fiber matrix to the soil surface. Hydraulically applied Terra-Matrix creates a non-toxic, erosion resistant blanket that prevents polymer leaching and dispersion of soil particles. The university-tested Terra-Matrix formulation is designed to stand up to multiple rainfall events.

### TERRA-MATRIX™ SM

- Contours with the surface to insure intimate soil contact
- Forms an erosion resistant, built-in-place blanket
- Non-toxic, environmentally safe and biodegradable
- No fish or wildlife concerns
- No netting, staples or lifting
- Pre-blended for consistent performance
- Provides outstanding erosion protection for 3-6 months
- Ideal for stabilizing moderate slopes and building pads

### LEADING THE INDUSTRY

Profile Products LLC is the world's largest producer of erosion control blankets, hydraulic mulches, flexible growth media, bonded fiber matrices, storm water treatment devices and complementary accessories. Many of today's standards were innovations introduced by Profile. Those products, along with on-site consultation and on-going service comprise Profile Erosion Control Solutions™. PECS is designed to help you find the most cost-effective means of controlling erosion, establishing vegetation and ensuring NPDES Phase II Compliance.



### THE PROFILE PERFORMANCE PYRAMID

Look to Terra-Matrix for cost effective soil stabilization.

# Terra-Matrix™ SM Specification

This section specifies a hydraulically applied Stabilized Matrix (SM) composed of long strand, Thermally Refined™ wood fibers and a proprietary crosslinked, hydro-colloid based polymer tackifier. The SM may require a 24-48 hour curing period to achieve maximum performance. Once cured, the SM forms an intimate bond with the soil surface to create a continuous, flexible erosion resistant blanket that provides temporary soil stabilization, rapid germination and accelerated plant growth.

The Stabilized Matrix shall be Terra-Matrix™ SM and conform to the following property values when uniformly applied at a rate of 3000 pounds per acre (3400 kilograms/hectare) under laboratory conditions.

	TEST METHOD <sup>1</sup>	ENGLISH	SI
<b>PHYSICAL</b>			
Mass Per Unit Area	ASTM D-6566	9.9 oz/yd <sup>2</sup>	336 g/m <sup>2</sup>
Thickness	ASTM D-6525	0.10 in	2.5 mm
% Ground Cover	ASTM D-6567	95%	95%
Water Holding Capacity	Profile Products <sup>2</sup>	1350%	1350%
Cure Time	Observed	24-48 hr	24-48 hr
Color (fugitive dye)	Observed	Green	Green
<b>ENDURANCE</b>			
Functional Longevity	Observed	3-6 months	3-6 months
<b>PERFORMANCE</b>			
Cover Factor <sup>3</sup> (5 in/hr event)	Large Scale Testing <sup>5</sup>	0.10	0.10
% Effectiveness <sup>4</sup>	Large Scale testing <sup>5</sup>	90%	90%

1. ASTM test methods developed for Rolled Erosion Control Products.

2. Water Holding Capacity test developed by Profile Products LLC.

3. Cover Factor is calculated as soil loss ratio of treated surface versus an untreated control surface.

4. % Effectiveness = One minus Cover Factor multiplied by 100%.

5. Large scale testing conducted at Utah Water Research Laboratory using rainfall simulator on 2.5H:1V slope at a 5-inch/hour rate and a 30 minute duration.

## COMPOSITION

All components of the SM shall be pre-packaged by the Manufacturer to assure material performance and in compliance with the following values. **Under no circumstances will field mixing of additives or components be accepted.**

Thermally Processed Wood Fibers – 83% ± 4%

Proprietary Crosslinked Hydro-Colloid Based Tackifier – 5% ± 1%

Moisture Content – 12% ± 3%

## INSTALLATION

Strictly comply with manufacturer's installation instructions and recommendations. For optimum pumping and application performance use approved mechanically agitated, hydraulic seeding/mulching machines with a fan-type nozzle (50-degree tip). Apply SM from opposing directions and to achieve best soil coverage.

Erosion Control and Revegetation:

Step One: Mix and apply seed and soil amendments with small amount of SM for visual metering.

Step Two: Mix and apply SM at a rate of 50 lb per 125 gallons (23 kg/475 liters) of water over freshly seeded surfaces.

Confirm loading rates with equipment manufacturer. Do not leave seeded surfaces unprotected, especially if precipitation is imminent.

SLOPE GRADIENT/CONDITION	ENGLISH	SI
≤ 4H to 1V	2000 lb/ac	2250 kg/ha
> 4H to 1V and ≤ 3H to 1V	2500 lb/ac	2800 kg/ha
> 3H to 1V and ≤ 2.5H to 1V	3000 lb/ac	3400 kg/ha
> 2.5H to 1V and ≤ 2H to 1V	3500 lb/ac	3900 kg/ha

Consult comprehensive CSI formatted SM specification for additional details.

## PACKAGING

Bags: Net Weight - 50 lb, UV and weather-resistant plastic film.

Pallets: Weather-proof, stretch-wrapped with UV resistant pallet cover, 40 bags/pallet, 1 ton/pallet.



Your Trusted Partner In Soil Solutions



For technical information call 1-866-325-6262. For distributor location and customer service call 1-800-366-1180.

©2005 Profile Products LLC, all rights reserved.

750 Lake Cook Road · Suite 440 · Buffalo Grove, IL 60089

www.profileproducts.com

TMSM-01 9/05

